

## Test Report

No. CANEC0901092601

Date: 16 Mar 2009

Page 1 of 6

1 STEP (DONGGUAN) PACKING MATERIAL CO.,LTD.  
NO. 44, NIUTOU COMMERCIAL STREET. NIUSHAN, DONGGUAN CITY, GUANG DONG  
CHINA

The following sample(s) was/were submitted and identified on behalf of the clients as :  
HUMIDITY INDICATOR CARD-5%, 8%, 10%, 15%, 20%, 30%, 40%, 50%, 60%

SGS Job No. : 11668947 - GZ  
Date of Sample Received : 11 Mar 2009  
Testing Period : 11 Mar 2009 - 14 Mar 2009  
Test Requested : Selected test(s) as requested by client.  
Test Method : Please refer to next page(s).  
Test Results : Please refer to next page(s).

Signed for and on behalf of  
SGS-CSTC Ltd.



Huang Fang, Sunny  
Sr. Engineer

This document is issued by the Company under its General Conditions of Service printed overleaf or available on request and accessible at <http://www.sgs.com/termsandconditions.htm>. Attention is drawn to the limitation of liability, indemnification and jurisdiction issues defined therein. Any holder of this document is advised that information contained hereon reflects the Company's findings at the time of its intervention only and within the limits of Client's instructions, if any. The Company's sole responsibility is to its Client and this document does not exonerate parties to a transaction from exercising all their rights and obligations under the transaction documents. Any unauthorized alteration, forgery or falsification of the content or appearance of this document is unlawful and offenders may be prosecuted to the fullest extent of the law.  
Unless otherwise stated the results shown in this test report refer only to the sample(s) tested. This document cannot be reproduced except in full, without prior approval of the Company.

# Test Report

No. CANEC0901092601

Date: 16 Mar 2009

Page 2 of 6

## Test Results:

ID for specimen 1 : CAN09-010926.001  
Description for specimen 1 : White sheet w/ blue surface (40%) + White sheet w/ blue surface (50%) + White sheet w/ blue surface (60%)

## Heavy metal(s)

Test Item(s)	Unit	Test Method (Reference)	Result	MDL
Cadmium (Cd)	mg/kg	IEC 62321:2008, ICP-OES	N.D.	2
Lead (Pb)	mg/kg	IEC 62321:2008, ICP-OES	N.D.	2
Mercury (Hg)	mg/kg	IEC 62321:2008, ICP-OES	N.D.	2
Hexavalent Chromium (CrVI) by alkaline extraction	mg/kg	IEC 62321:2008, UV-Vis	N.D.	2

## Note:

1. mg/kg = ppm
2. N.D. = Not Detected (< MDL)
3. MDL = Method Detection Limit

## Flame Retardants

Test Item(s)	Unit	Test Method (Reference)	Result	MDL
Sum of PBBs	mg/kg	-	N.D.	-
Monobromobiphenyl	mg/kg	IEC 62321:2008, GC-MS	N.D.	5
Dibromobiphenyl	mg/kg	IEC 62321:2008, GC-MS	N.D.	5
Tribromobiphenyl	mg/kg	IEC 62321:2008, GC-MS	N.D.	5
Tetrabromobiphenyl	mg/kg	IEC 62321:2008, GC-MS	N.D.	5
Pentabromobiphenyl	mg/kg	IEC 62321:2008, GC-MS	N.D.	5
Hexabromobiphenyl	mg/kg	IEC 62321:2008, GC-MS	N.D.	5
Heptabromobiphenyl	mg/kg	IEC 62321:2008, GC-MS	N.D.	5
Octabromobiphenyl	mg/kg	IEC 62321:2008, GC-MS	N.D.	5
Nonabromobiphenyl	mg/kg	IEC 62321:2008, GC-MS	N.D.	5
Decabromobiphenyl	mg/kg	IEC 62321:2008, GC-MS	N.D.	5
Sum of PBDEs	mg/kg	-	N.D.	-
Monobromodiphenyl ether	mg/kg	IEC 62321:2008, GC-MS	N.D.	5
Dibromodiphenyl ether	mg/kg	IEC 62321:2008, GC-MS	N.D.	5
Tribromodiphenyl ether	mg/kg	IEC 62321:2008, GC-MS	N.D.	5
Tetrabromodiphenyl ether	mg/kg	IEC 62321:2008, GC-MS	N.D.	5
Pentabromodiphenyl ether	mg/kg	IEC 62321:2008, GC-MS	N.D.	5
Hexabromodiphenyl ether	mg/kg	IEC 62321:2008, GC-MS	N.D.	5
Heptabromodiphenyl ether	mg/kg	IEC 62321:2008, GC-MS	N.D.	5
Octabromodiphenyl ether	mg/kg	IEC 62321:2008, GC-MS	N.D.	5
Nonabromodiphenyl ether	mg/kg	IEC 62321:2008, GC-MS	N.D.	5
Decabromodiphenyl ether ##	mg/kg	IEC 62321:2008, GC-MS	N.D.	5

This document is issued by the Company under its General Conditions of Service printed overleaf or available on request and accessible at <http://www.sgs.com/termsandconditions.htm>. Attention is drawn to the limitation of liability, indemnification and jurisdiction issues defined therein. Any holder of this document is advised that information contained hereon reflects the Company's findings at the time of its intervention only and within the limits of Client's instructions, if any. The Company's sole responsibility is to its Client and this document does not exonerate parties to a transaction from exercising all their rights and obligations under the transaction documents. Any unauthorized alteration, forgery or falsification of the content or appearance of this document is unlawful and offenders may be prosecuted to the fullest extent of the law. Unless otherwise stated the results shown in this test report refer only to the sample(s) tested. This document cannot be reproduced except in full, without prior approval of the Company.

# Test Report

No. CANEC0901092601

Date: 16 Mar 2009

Page 3 of 6

## Note:

1. mg/kg = ppm
2. N.D. = Not Detected (< MDL)
3. MDL = Method Detection Limit
4. "-" = Not regulated
5. ## = The exemption of DecaBDE in polymeric application according 2005/717/EC was overruled by the European Court of Justice by its decision of 01.04.2008. Subsequently DecaBDE is included in the sum of PBDE after 01.07.2008

Remark1: Results shown are of the total weight of mixed samples.

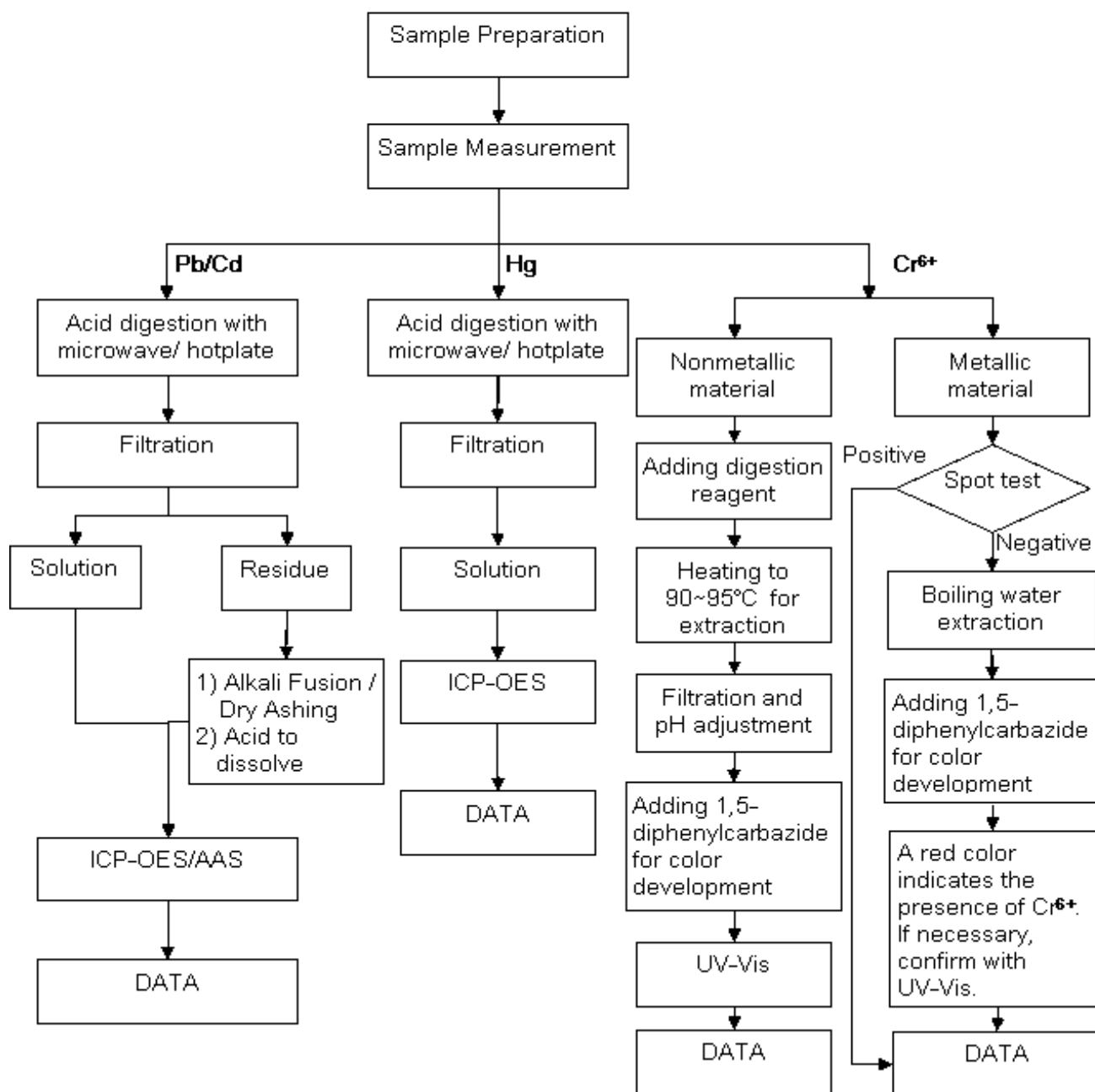
Remark2: The sample(s) was/were analyzed on behalf of the applicant as mixing sample in one testing. The above result(s) was/were only given as the informality value.

This document is issued by the Company under its General Conditions of Service printed overleaf or available on request and accessible at <http://www.sgs.com/termsandconditions.htm>. Attention is drawn to the limitation of liability, indemnification and jurisdiction issues defined therein. Any holder of this document is advised that information contained hereon reflects the Company's findings at the time of its intervention only and within the limits of Client's instructions, if any. The Company's sole responsibility is to its Client and this document does not exonerate parties to a transaction from exercising all their rights and obligations under the transaction documents. Any unauthorized alteration, forgery or falsification of the content or appearance of this document is unlawful and offenders may be prosecuted to the fullest extent of the law. Unless otherwise stated the results shown in this test report refer only to the sample(s) tested. This document cannot be reproduced except in full, without prior approval of the Company.

### ATTACHMENTS

#### Testing Flow Chart

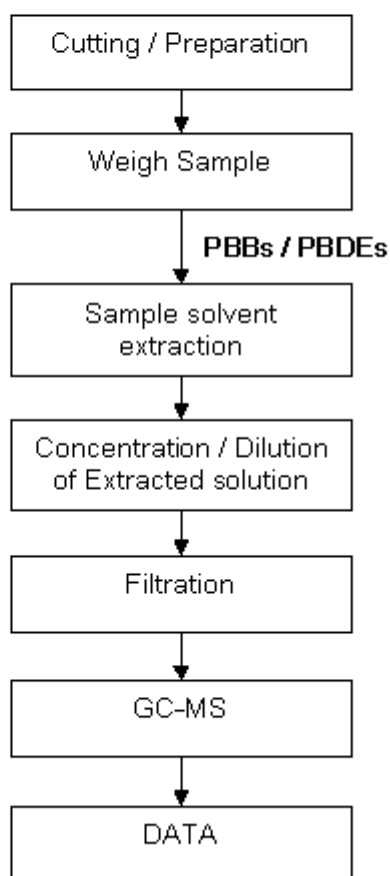
- 1) Name of the person who made measurement: Luke Xu / Lily Lee
- 2) Name of the person in charge of measurement: Adams Yu / Leo Wang
- 3) These samples were dissolved totally by pre-conditioning method according to below flow chart (Cr<sup>6+</sup> test method excluded).



This document is issued by the Company under its General Conditions of Service printed overleaf or available on request and accessible at [http://www.sgs.com/terms\\_and\\_conditions.htm](http://www.sgs.com/terms_and_conditions.htm). Attention is drawn to the limitation of liability, indemnification and jurisdiction issues defined therein. Any holder of this document is advised that information contained hereon reflects the Company's findings at the time of its intervention only and within the limits of Client's instructions, if any. The Company's sole responsibility is to its Client and this document does not exonerate parties to a transaction from exercising all their rights and obligations under the transaction documents. Any unauthorized alteration, forgery or falsification of the content or appearance of this document is unlawful and offenders may be prosecuted to the fullest extent of the law. Unless otherwise stated the results shown in this test report refer only to the sample(s) tested. This document cannot be reproduced except in full, without prior approval of the Company.

### Testing Flow Chart

- 1) Name of the person who made measurement: Lina Tang
- 2) Name of the person in charge of measurement: Tina Zhao



This document is issued by the Company under its General Conditions of Service printed overleaf or available on request and accessible at <http://www.sgs.com/termsandconditions.htm>. Attention is drawn to the limitation of liability, indemnification and jurisdiction issues defined therein. Any holder of this document is advised that information contained hereon reflects the Company's findings at the time of its intervention only and within the limits of Client's instructions, if any. The Company's sole responsibility is to its Client and this document does not exonerate parties to a transaction from exercising all their rights and obligations under the transaction documents. Any unauthorized alteration, forgery or falsification of the content or appearance of this document is unlawful and offenders may be prosecuted to the fullest extent of the law. Unless otherwise stated the results shown in this test report refer only to the sample(s) tested. This document cannot be reproduced except in full, without prior approval of the Company.

## Test Report

No. CANEC0901092601

Date: 16 Mar 2009

Page 6 of 6

Sample photo:



SGS authenticate the photo on original report only

\*\*\* End of Report \*\*\*

This document is issued by the Company under its General Conditions of Service printed overleaf or available on request and accessible at <http://www.sgs.com/termsandconditions.htm>. Attention is drawn to the limitation of liability, indemnification and jurisdiction issues defined therein. Any holder of this document is advised that information contained hereon reflects the Company's findings at the time of its intervention only and within the limits of Client's instructions, if any. The Company's sole responsibility is to its Client and this document does not exonerate parties to a transaction from exercising all their rights and obligations under the transaction documents. Any unauthorized alteration, forgery or falsification of the content or appearance of this document is unlawful and offenders may be prosecuted to the fullest extent of the law. Unless otherwise stated the results shown in this test report refer only to the sample(s) tested. This document cannot be reproduced except in full, without prior approval of the Company.